

# CODELINE® 25-300

## MEMBRANE HOUSING FOR LIGHT COMMERCIAL APPLICATION

### MEMBRANE HOUSING DATASHEET

ARTICLE CODE: 25-300

#### GENERAL INFORMATION

Codeline 25-300 is specially designed membrane housing of 2.5" diameter made up of filament wound epoxy/glass composite. This pioneering product is designed to meet the demands of continuous and long term use in comparatively small scale commercial units. These Low Pressure membrane housings are operated upto a pressure of 300 psi. These End Entry Membrane Housings are designed to accommodate any standard make of 2.5" nominal diameter spiral-wound membrane element with element length as mentioned in below specification.

#### UNIQUE FEATURES

- Head assembly made of high grade engineering thermoplastics for high strengths & superior chemical resistance
- Corrosion resistant superior quality with improved system performance
- Integrally formed locking grooves provide better end margin strength
- Mirror Finish ID for easy & quick loading and unloading of membranes
- Exteriors coated with high gloss polyurethane paint for UV Resistance
- Head Seal Area is formed by mandrel surface; hence more accurate
- Compact design for use in compact and low energy water treatment units

#### CERTIFICATIONS

- Pentair Standard

#### CODELINE 25-300 SPECIFICATION\*

Model No.	Drawing No.	Design/Operating Pressure	Max. Operating Temperature	Min. Operating Temperature	Qualification Pressure	Element Length
CODELINE 25-300	99359	300 PSI/20 Bar	120°F/49°C	20°F/-7°C	1200 PSI/82 Bar	- 14" (One) - 21" (One) - 40" (One)

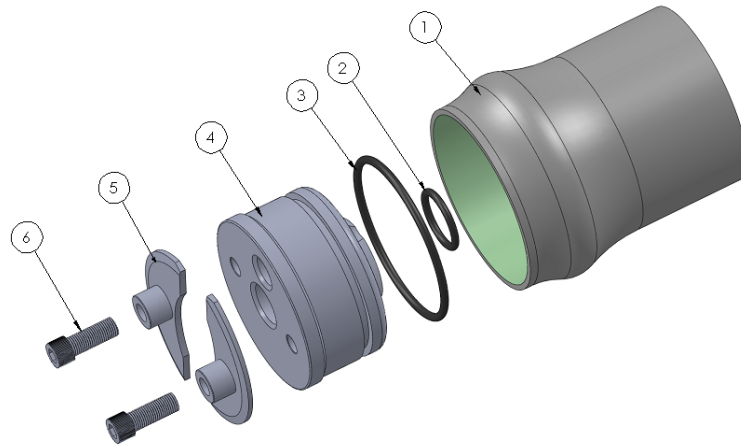
\* Specifications subject to change without notice (for more details refer model specific engineering drawings)

# CODELINE® 25-300

## MEMBRANE HOUSING FOR LIGHT COMMERCIAL APPLICATION

MEMBRANE HOUSING DATASHEET

### EXPLODED VIEW & DETAILS



A GENERIC VIEW FOR VISUAL REFERENCE ONLY

DRG REG	QTY	Description	Material	25-300
1	1	Shell	Filament Wound Epoxy/Glass composite – Head Locking grooves integrally wound in place. Shell exterior coating with high gloss polyurethane paint.	Order section
2	2	PWT Seal	Ethylene Propylene – O Ring	45296
3	2	Head Seal	Ethylene Propylene – O Ring	45313
4	2	End Plug	Engineering Thermoplastic	96005
5	4	Locking Segment	316 Stainless Steel	50371
6	4	Screw	304 Stainless Steel	45232
7*	AR	Saddle – Optional	Engineering Thermoplastic	45058
8*	AR	Strap – Optional	304 Stainless Steel – PVC Cushion	RO 1057

\* Not shown in the above exploded view



CODELINE®

PENTAIR WATER INDIA PVT. LTD. L / 52 – 55, VERNA INDUSTRIAL ESTATE, VERNA, GOA, INDIA – 403 722 - WWW.CODELINE.COM

All Pentair trademarks and logos are owned by Pentair, Inc. All other brand or product names are trademarks or registered marks of their respective owners. Because we are continuously improving our products and services, Pentair reserves the right to change specifications without prior notice. Pentair is an equal opportunity employer.

DS CODELINE 25-300 E-11/14 © 2013 Pentair, Inc. All Rights Reserved.